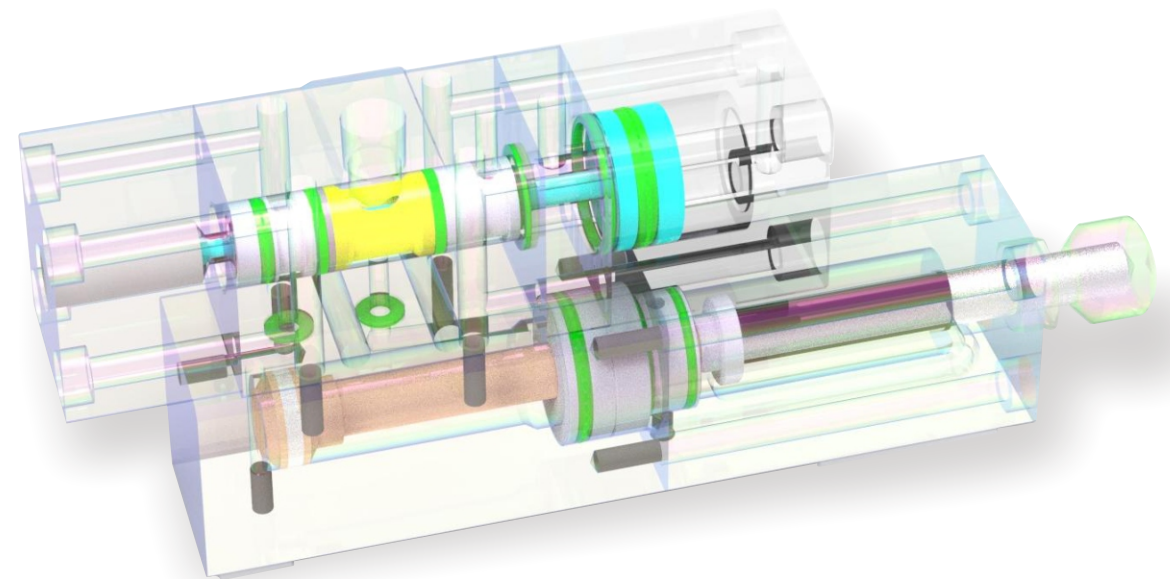




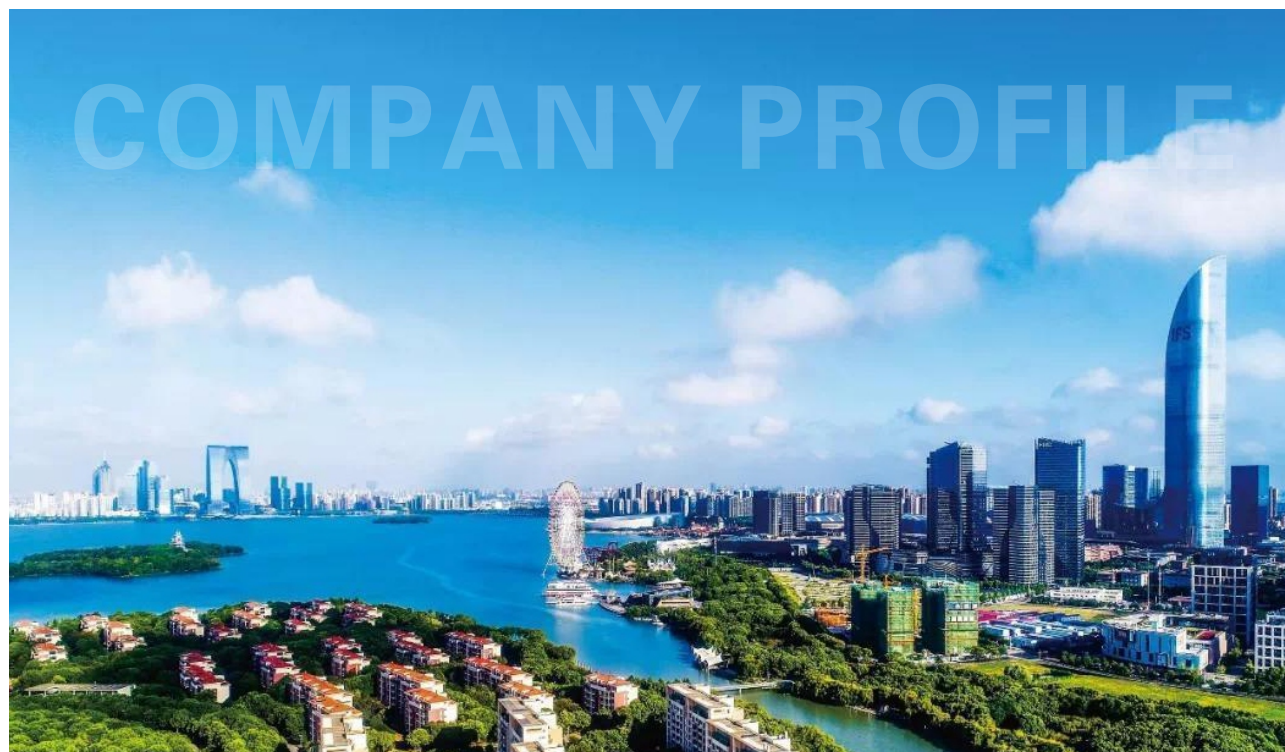
# T Dispensing Solution



**苏州塔罗斯流体技术有限公司**  
Suzhou Talos Fluid Technology Co.,Ltd

电话 Tel : +86 -13861303176 董先生  
邮箱 E-Mail : jianjiang.dong@hotmail.com  
地址 Address : 苏州工业园区金陵东路156号3幢213室  
网址https : www.talostech.cn

**苏州塔罗斯流体技术有限公司**  
Suzhou Talos Fluid Technology Co.,Ltd



## Company profile 公司概况

- 苏州工业园区 Suzhou Industrial Park (SIP)
  - 新加坡与中国政府共同开发建设  
Singapore/China government jointly developed
  - 世界最大的工业园区之一  
One of the largest industrial park in the world
  - 战略重地 Strategic location  
70万人口在园区 700,000 people in Park
  - 国际物流中心 International Logistics Center
- 成立时间/Year Established: 2020 年 9 月
- 占地面积/Floor Space: 210 m2
- 集开发与制造装配于一体  
Combining development, manufacturing and assembly in one location
- 地处: 苏州工业园区金陵东路156号  
Site Area: Suzhou Industrial Park.
- 客户分布/Customers:  
VEGA. SEW. CW bearing...
- 产品/Product:
  - ✓ 点胶阀 Dispensing Valve
  - ✓ 油脂定量阀 Metering Valve
  - ✓ 调压阀 Pressure regulator
  - ✓ 供胶/供脂系统 Grease/Glue supply system
  - ✓ 其他点胶/供脂/增压类技术咨询及服务
  - ✓ Other dispensing/Booster technology consulting and service

## Talos Product catalogue 公司产品目录

### 塔罗斯产品 Talos Product Family

#### 定量/喷涂产品 Metering/Dispensing Product

#### 定量/喷涂部件+供料泵 Metering/Dispensing components + Pumps

- 定量阀 Metering Valve
- 喷涂阀 Dispensing Valve
- 喷雾阀 Spray Valve
- 双组份混料阀 2K Mix Valve
- 调压阀 Pressure Regulator
- 供料泵 Drum Pumps
- 齿轮流量计 Gear Flow Meter
- 螺杆流量计 Helical Gear Flow Meter
- Z泵定量单元 Z-Pump Metering Unit
- 气动喷射阀 Pneumatic High Speed Valve
- 压电阀 Piezo Valve

#### 定量/喷涂产品 Metering/Dispensing Product

##### 单组份定量系统 1K Metering System

- GMS 1K 齿轮伺服定量系统 1K Gear Servo Metering System
- PFC 精确连续流量计量和分配系统 Precision Flow Control System
- SMV1 1K 螺杆阀 1K Screw metering Valve

##### 双组份定量系统 2K Metering System

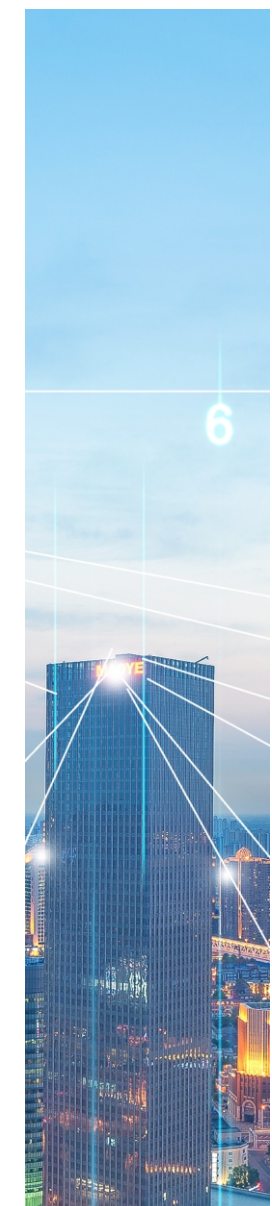
- 2K 定比定量系统 2K Fixed-Ratio Servo Metering System
  - ✓ EFP: 电驱定比定量系统 Electric, Fixed-Ratio Proportioner
  - ✓ HFP: 液驱定比定量系统 Hydraulic, Fixed-Ratio Proportioner
- 2K 柱塞式伺服定量系统 2K Piston Servo Metering System
  - ✓ DPM: 2K 柱塞式定量系统 2K Piston Servo Metering Proportioner
- SMV2 2K 螺杆阀 2K Screw metering Valve

#### 材料准备与供给单元 Material Preparation And Feeding Unit

- DPL 自流平介质备料单元 DPL Self-leveling Media Material Preparing Unit
- DPP 真空压盘供料单元 DPP Vacuum Plate Material Feeding Unit
- SPB 单柱塞增压供料单元 Single Piston Booster Material Feeding Unit

#### 附件 Accessory

- 电容式液位计 Capacitive level sensor
- 高质量/高压液压管 High quality/high pressure hose
- 加热温控管 Heating pressure hose
- 储液罐 Liquid Tank



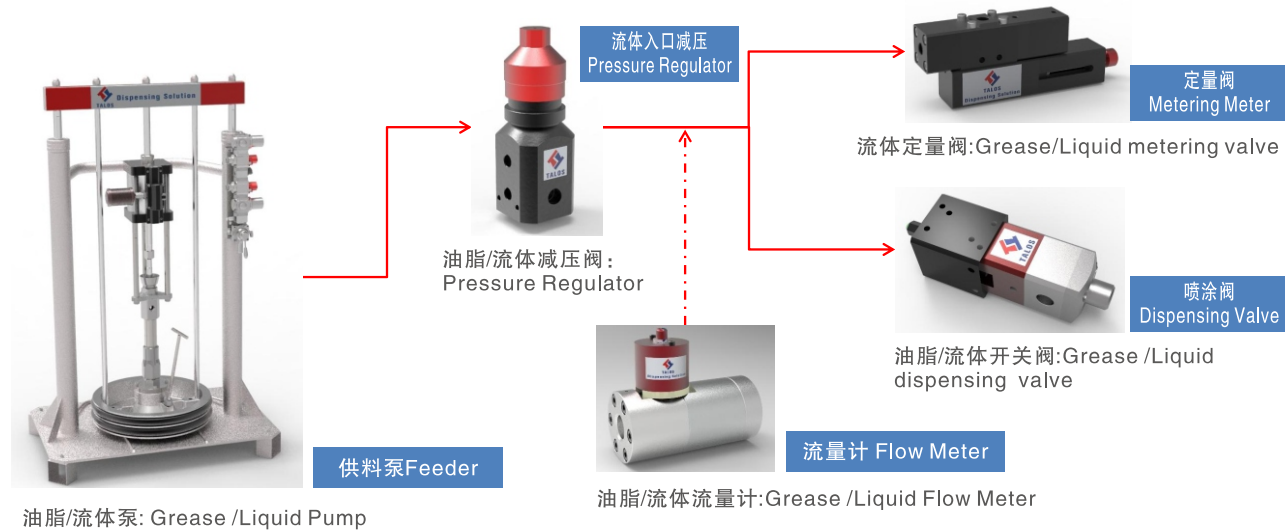


## Typical application system and product 典型系统应用和产品

### 典型定量润滑/点胶/喷涂系统Typical grease/liquid metering/dispensing application system

#### 典型应用行业：Typical application

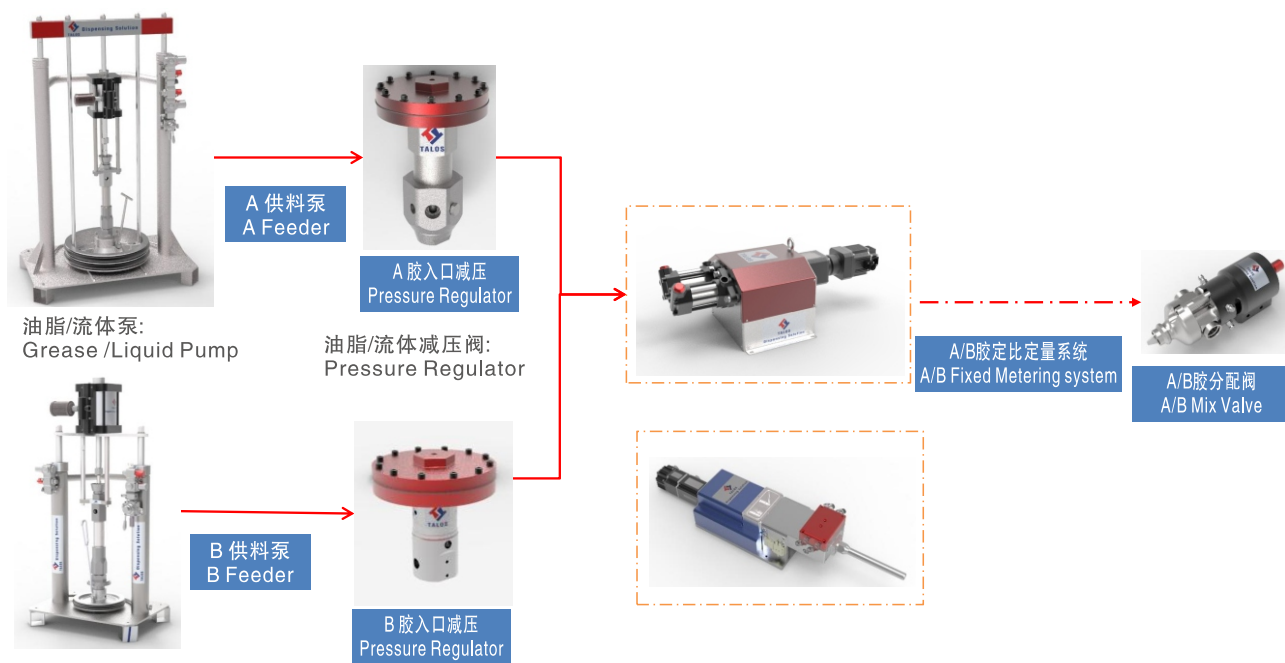
汽车零部件 Automotive components  
电子涂胶行业 Electronic dispensing industry  
机械运动部件 Mechanical moving parts  
其他 Others



### 典型A/B胶定量混胶系统：Talos A/B Metering & Mix system

#### 典型应用行业：Typical application

电子涂胶行业 Electronic dispensing industry  
A/B定量定比混胶 A/B metering & mix  
新能源汽车行业 New energy vehicle industry



## Metering components + Pumps 定量部件+供料泵

- 量阀 Metering Valve
- 喷涂阀 Dispensing Valve
- 喷雾阀 Spray Valve
- 双组份混料阀 2K Mix Valve
- 调压阀 Pressure Regulator
- 供料泵 Drum Pumps
- 齿轮流量计 Gear Flow Meter
- 螺杆流量计 Helical Gear Flow Meter
- Z泵定量单元 Z-Pump Metering Unit
- 气动喷射阀 Pneumatic High Speed Valve
- 压电阀 Piezo Valve

### 定量阀 Metering Valve

Talos定量阀适用于低粘度、高粘度介质（如油脂、油、粘合剂、密封剂和硅树脂）的计量和应用。它们被广泛用于工业的所有领域。计量阀满足最佳计量结果所需的所有标准：高精度、优良的再现性和高质量标准。

Metering valves from Talos are suitable for the metering and application of low to high-viscosity media such as greases, oils, adhesives, sealants and silicones. They are used in all areas of industry. The metering valves meet all the criteria required for optimal metering results: high precision, excellent reproducibility and high quality standards.

弹夹式油脂定量阀 Cartridge type metering



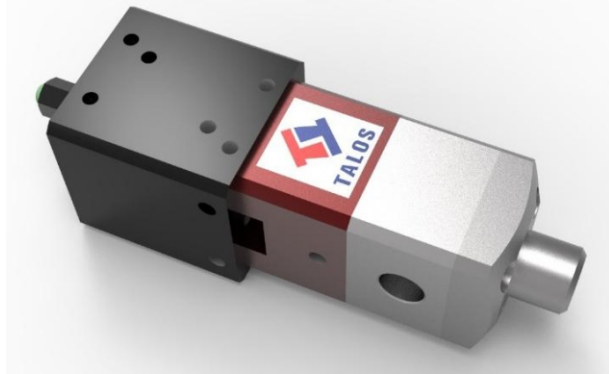
非标定制15~100cc定量阀  
Non-Stand 15~100cc metering valve based on customer requirement

型号Model Name	MC-003	MC-005	MC-010	MC-015
重量Weight	515g	515g	535g	535g
尺寸Body size	L180*W61*H30	L180*W61*H30	L191*W40*H43	L191*W40*H43
阀体结构 Type of Valve	Cartridge	Cartridge	Cartridge	Cartridge
压缩空气范围 Air supplier Range	4.0~7.0 Bar	4.0~7.0 Bar	4.0~7.0 Bar	4.0~7.0 Bar
粘度范围 Viscosity Rang	1~1,000,000 cp	1~1,000,000 cp	1~1,000,000 cp	1~1,000,000 cp
定量范围 Dispensing Volume Range	0.0~3.0 CC	0.0~5.0 CC	0.0~10.0 CC	0.0~15.0 CC
精度Accuracy	+/-1%	+/-1%	+/-1%	+/-1%
最大流体压力 Maximum fluid supply Pressure	<Max 250 Bar			
适用流体 Apply Fluids	Grease,Oil,RTV			
进口/出口螺纹尺寸 Fluid Inlet/Outlet Port	Inlet:Rc1/8" Outlet G1/8"	Inlet:Rc1/8" Outlet G1/8"	Inlet:Rc1/8" Outlet G1/8"	Inlet:Rc1/8" Outlet G1/8"

喷涂阀（Dispensing Valve）

喷涂阀用于工业的所有领域，用于低粘度到高粘度介质的应用，如润滑剂、粘合剂和密封剂。这需要高精度和再现性。有许多设计，系列和尺寸，正确的阀门总是可以找到每个单独的应用。

Dispensing valves from Talos are used in all areas of industry for the application of low to high–viscosity media, such as lubricants, adhesives and sealants. This requires high precision and reproducibility. With numerous designs, series and sizes, the right valve can always be found for each individual application.



型号Model Name	OFI–005
重量Weight	635g
尺寸Body size	L160*W45*H40
阀体结构Type of Valve	Integrated
压缩空气范围Air supplier Range	4.0~7.0 Bar
粘度范围Viscosity Rang	1~5,000,000 cp
出口直径Discharge ID	2.0mm
最大流体压力 Maximum fluid supply Pressure	<Max 250 Bar
适用流体 Apply Fluids	Grease & Oil&RTV/Epoxy/Polyurethane
进口/出口螺纹尺寸 Fluid Inlet/ Outlet Port	Inlet: Rc 1/4 Outlet: G1/4



型号Model Name	OFS–001
重量Weight	310g
尺寸Body size	L76*Φ25
阀体结构Type of Valve	Integrated
压缩空气范围Air supplier Range	4.0~7.0 Bar
粘度范围Viscosity Rang	1,000,000 cp
出口直径Discharge ID	1.0mm
最大流体压力 Maximum fluid supply Pressure	<Max 35 Bar
适用流体 Apply Fluids	Grease & Oil&RTV/Epoxy/Polyurethane
进口/出口螺纹尺寸 Fluid Inlet/ Outlet Port	Inlet: Rc 1/4 Outlet: G1/4

喷雾阀（Spray Valve）

喷雾阀是一种特殊的阀门，专为润滑脂/油/胶水和其他化学液体的全表面应用而设计。它适用于间歇和连续材料应用，广泛的应用在难以进入的区域进行喷涂。

The spray valve is a special kind of valve designed for full–surface application of greases /oils/glues and other liquid chemicals. It is suitable for both intermittent and continuous material applications with a very fast and accurate intermittent operation. A wide range of available extensions and attachments open up the possibility of spray application in hard–to–access areas.



圆形喷雾 Dot Spray



根据客户需求，定制各种喷嘴加长杆及喷雾形式  
Based on customer application requirement ,  
Special build extension nozzle for spray



环形喷雾 Ring Spray



型号 Model Name	SPS –001	SPS –002	SPSR –001
重量 Weight	215g	255g	315g
尺寸 Body size	L56*Φ25	L56*Φ25	L130*Φ25
阀体结构 Type of Valve	Integrated	Integrated	Integrated
压缩空气范围 Air supplier Range	4.0~7.0 Bar	4.0~7.0 Bar	4.0~7.0 Bar
粘度范围 Viscosity Rang	1~100,000 cp	1~100,000 cp	1~100,000 cp
最大流体压力 Maximum fluid supply Pressure	< Max 15.0 Bar	< Max 15.0 Bar	< Max 15.0 Bar
适用流体 Apply Fluids	Oil & Glue& other liquid chemical	Oil & Glue& other liquid chemical	Oil & Glue& other liquid chemical
进口/出口螺纹尺寸 Fluid Inlet/ Outlet Port	Inlet: Rc 1/8	Inlet: Rc 1/8	Inlet: Rc 1/8

根据客户应用要求及流体材质(粘度/颗粒磨损性等)情况，配置定子材料及陶瓷转子可供选择  
Based on customer application requirement & liquid material to define stator property and providing ceramics rotor option.

双组份混料阀 2K Mix Valve

Talos的双组份混料阀广泛应用于工业领域，用于低粘度到高粘度介质的混料应用，如AB环氧树脂/散热胶等多种胶体。可以配置多种的混合比例，为客户提供专业、精准的混胶方案。

Talos 2Kmixing valve is widely used in industrial fields for mixing of low viscosity to high viscosity media, such as AB epoxy resin / heat dissipation adhesive and other colloids. Various mixing ratios can be configured to provide customers with professional and accurate mixing solutions.



型号 Model Name	MXI–010	MXI–005	MXI–001
重量 Weight	515g	510g	535g
尺寸 Body size	L168*W57*H60	L168*W57*H60	L168*W57*H60
液体种类 Liquid Type	2K	2K	2K
阀体结构 Type of Valve	Integrated	Integrated	Integrated
压缩空气范围 Air supplier Range	3.0~7.0 Bar	3.0~7.0 Bar	3.0~7.0 Bar
粘度范围 Viscosity Rang	1~5,000,000 cp	1~5,000,000 cp	1~5,000,000 cp
A/B 混胶比例 Mix Ratial	10:1	10:5	1:1
最大流体压力 Maximum fluid supply Pressure	< Max200 Bar	< Max 200 Bar	< Max 200 Bar
适用流体 Apply Fluids	Epoxy/polyurethane/Heat dissipation adhesive & Others		
进口螺纹尺寸 Inlet Port	Rc 1/4"	Rc 1/4"	Rc 1/4"

Z泵定量单元 Z–Pump Metering Unit

Z泵定量系统是一种连续性的出胶/出脂系统，能适用于各种低/中/高粘度介质（如油脂、油、粘合剂、密封剂和硅树脂等）的计量应用。高精度，优良的再现性和质量标准，能够最大化满足客户定量工艺与节拍的需求。

Z–pump metering system is a continuous glue / grease delivery system, which can be applied to metering applications for various low / medium / high viscosity media (such as grease, oil, adhesive, sealant and silicone resin, etc.). High precision, excellent reproducibility and high quality standards, can maximize the customer quantitative process and beat cycle time requirements.



型号 Model Name	ZMP–010	ZMP–020	ZMP–030	ZMP–040	ZMP–080	ZMP–100	ZMP–160
重量 Weight	2.53Kg						
尺寸 Body size	L340*W150*H150						
泵结构 Type of Pump	Integrated						
压缩空气范围 Air supplier Range	NA						
粘度范围 Viscosity Rang	1~5,000,000 cp						
定量范围 Dispensing Volume Range	10 CC	20 CC	30 CC	40 CC	80 CC	100 CC	160 CC
精度 Accuracy	+/- 1%						
最大流体压力 Maximum fluid supply Pressure	< Max 250 Bar						
适用流体 Apply Fluids	Grease , Oil, RTV& Epoxy , polyurethane						
进口/出口螺纹尺寸 Fluid Inlet/ Outlet Port	Inlet Rc 1/4" Outlet : Rc 1/4"						

根据客户应用要求及流体材质(粘度/颗粒磨损性)等情况，选配密封结构/材质及缸体材料等  
Based on customer application requirement & liquid material to define sealing structure/property and cylinder material & treatment and so on.

性能预览 Property Overview			
单组份1K	+++	带填充剂Filled	+
双组份2K		研磨性 Abrasive	–
大气环境 Atmospheric Pressure	+++	连续性 Continuous	+++
真空环境Vacuum		准备 Preparation	
液体 Liquid	+	供料 Feeding	
高粘度	+++		
+ + + = 非常优秀 Excellent + + = 优秀Good + = 有限制 Limited – = 不推荐 Not Recomand			



流体调压阀（ Fluid Pressure Regulator ）

TALOS流体调压阀将泵送材料的压力降低到最佳工作值。它们专为润滑脂、油和硅树脂的精确剂量而设计，随着压力的降低，这些阀门还补偿了通过活塞泵输送材料时产生的脉动，更具体地说，是在泵转换位置的瞬间。这一问题表现为材料压力和流量的波动，并可能导致产品质量下降，特别是在剂量非常小、连续或喷雾应用的情况下。流体调压阀是物料流动完全稳定的保证。对于研磨性或反应性材料，我们建议使用带隔膜式材料的调压阀。

Talos material pressure regulators reduce the pressure of the pumped material down to the optimum working value. They are designed specifically for the precise dosing of greases, oils and silicones. Along with reducing pressure, the valves also compensate for pulsations that occur when material is delivered via piston pumps, more specifically in the moment of the changeover position of the pump. This problem manifests itself in fluctuations in material pressure and flow and can lead to reduced product quality – particularly in cases of very small doses, continuous or spray applications. The material pressure regulator is a guarantee of a perfectly stable material flow. For abrasive or reactive material, we recommend our material pressure regulator with a membrane.

柱塞式调压阀Plunger type Pressure Regulator

	型号 Model Name	PRP-005
	重量 Weight	1515g
	尺寸 Body size	L195*W70*H70
	阀体结构 Type of Valve	Plunger
	进口压力方位 Inlet Pressure Range	< 500 Bar Max
	粘度范围 Viscosity Rang	1~5,000,000 cp
	调压范围 Outlet pressure range	35~350 Bar
	出口直径Discharge ID	5.0mm
	适用流体 Apply Fluids	Grease , Oil
	进口/出口压力表螺纹尺寸 Fluid Inlet/ Outlet gage Port	Inlet: G1/4" Outlet: G1/4"
	进口/出口螺纹尺寸 Fluid Inlet/ Outlet Port	Inlet: Rc3/8" Outlet: Rc3/8"

隔膜式调压阀 Diaphragm Type Pressure Regulator


	型号 Model Name	PRD-005
	重量 Weight	1515g
	尺寸 Body size	L210*W70*H70
	阀体结构 Type of Valve	Diaphragm
	进口压力方位 Inlet Pressure Range	<500 Bar Max
	粘度范围 Viscosity Rang	1~5,000,000 cp
	调压范围 Outlet pressure range	35~350 Bar
	出口直径Discharge ID	5.0mm
	适用流体 Apply Fluids	Grease , Oil, RTV& Epoxy ,polyurethane
	进口/出口压力表螺纹尺寸 Fluid Inlet/ Outlet gage Port	Inlet: G1/4" Outlet: G1/4"
	进口/出口螺纹尺寸 Fluid Inlet/ Outlet Port	Inlet: Rc3/8" Outlet: Rc3/8"

流体调压阀（ Fluid Pressure Regulator ）

Talos流体调压阀将泵送材料的压力降低到最佳工作值。它们专为润滑脂、油和硅树脂的精确剂量而设计。随着压力的降低，这些阀门还补偿了通过活塞泵输送材料时产生的脉动，更具体地说，是在泵转换位置的瞬间。这一问题表现为材料压力和流量的波动，并可能导致产品质量下降，特别是在剂量非常小、连续或喷雾应用的情况下。流体调压阀是物料流动完全稳定的保证。对于研磨性或反应性材料，我们建议使用带隔膜式材料的调压阀。

Talos material pressure regulators reduce the pressure of the pumped material down to the optimum working value. They are designed specifically for the precise dosing of greases, oils and silicones. Along with reducing pressure, the valves also compensate for pulsations that occur when material is delivered via piston pumps, more specifically in the moment of the changeover position of the pump. This problem manifests itself in fluctuations in material pressure and flow and can lead to reduced product quality – particularly in cases of very small doses, continuous or spray applications. The material pressure regulator is a guarantee of a perfectly stable material flow. For abrasive or reactive material, we recommend our material pressure regulator with a membrane.

气控柱塞式调压阀Air Control Plunger type Pressure Regulator

	型号 Model Name	PRA-310
	重量 Weight	1515g
	尺寸 Body size	L210*W70*H70
	阀体结构 Type of Valve	Plunger
	进口压力方位 Inlet Pressure Range	<500 Bar Max
	粘度范围 Viscosity Rang	1~5,000,000 cp
	调压范围 Outlet pressure range	7~310 Bar
	出口直径Discharge ID	5.0mm
	适用流体 Apply Fluids	Grease , Oil, RTV& Epoxy , polyurethane
	进口/出口压力表螺纹尺寸 Fluid Inlet/ Outlet gage Port	Inlet: G1/4" Outlet: G1/4"
	进口/出口螺纹尺寸 Fluid Inlet/ Outlet Port	Inlet/Outlet: 3/4" NPT

气控隔膜式调压阀 Air Control Diaphragm Type Pressure Regulator

	型号 Model Name	PRDA-310
	重量 Weight	1515g
	尺寸 Body size	L210*W70*H70
	阀体结构 Type of Valve	Diaphragm
	进口压力方位 Inlet Pressure Range	<500 Bar Max
	粘度范围 Viscosity Rang	1~5,000,000 cp
	调压范围 Outlet pressure range	7~310 Bar
	出口直径Discharge ID	5.0mm
	适用流体 Apply Fluids	Grease , Oil, RTV& Epoxy , polyurethane
	进口/出口压力表螺纹尺寸 Fluid Inlet/ Outlet gage Port	Inlet: G1/4" Outlet: G1/4"
	进口/出口螺纹尺寸 Fluid Inlet/ Outlet Port	Inlet/Outlet: 3/4" NPT

螺杆流量计 Helical Gear Flow Meter

Talos 正排量螺杆流量计,专门设计用于高流速和高粘度的材料进行计量。流量计压力损失小，广泛应用于粘度范围在30 – 1,000,000CPs的材料，在溶剂型和水性涂料与树脂、油类及催化剂等材料流量计量中有优秀的表现。

Positive displacement helical gear flow meters designed for higher flow rates and higher viscosity materials. The flowmeter has small pressure loss, it is widely used in materials with viscosity ranging from 30 to 1,000,000 CPs. It has excellent performance in flow measurement of solvent-based and water-based coatings and resins, oils and catalysts

	型号 Model Name	HFM-008
	重量 Weight	3.3Kg
	尺寸 Body size	L260*W130*H130
	工作温度 working Temp	0~150℃
	流体输入压力 Fluid Inlet Pressure	< Max 400 Bar
	粘度范围 Viscosity Rang	30~1,000,000 CPs
	流量范围(CC/Min) Flow Range (CC/Min)	190~7,571 CC/Min
	流量率(CC/Plus) Flow Rate (CC/Plus)	0.143CC/Plus
	精度 Accuracy	+/- 0.25%
	重复性 Repeatability	+/- 0.1%
	供电电源 Supply Power	10~30V DC
	标准电流(mA) Typicle Current (mA)	Max '15 mA
	信号输出 Signal Output	Plus
性能预览 Property Overview		
单组份1K	+++	带填充剂Filled +
双组份2K		研磨性 Abrasive -
大气环境 Atmospheric Pressure	+++	连续性 Continuous +++
真空环境Vacuum	+++	准备 Preparation
液体 Liquid	+++	供料 Feeding
高粘度	+++	
+ + + = 非常优秀 Exellent + + = 优秀Good + = 有限制 Limited - = 不推荐 Not Recomand		

GFM 齿轮流量计（ Gear Flow Meter ）

Talos 正排量双小齿轮流量计,专门设计用于高流速和低粘度材料进行计量。流量计压力损失小，广泛应用于粘度范围在20 – 3,000CPs的材料，在溶剂型和水性涂料，油类及催化剂等材料流量计量中有优秀的表现。

Positive displacement gear flow meters designed for higher flow rates and lower viscosity materials. The flowmeter has small pressure loss, it is widely used in materials with viscosity ranging from 20 to 3,000 CPs. It has excellent performance in flow measurement of solvent-based and water-based coatings , oils and catalysts

	型号 Model Name	GFM-002	GFM-007
	重量 Weight	1.4Kg	1.9Kg
	尺寸 Body size	L72*W78*H77	L83*W88*H77
	工作温度 working Temp	-30~80℃	-30~80℃
	流体输入压力 Fluid Inlet Pressure	< Max 400 Bar	< Max 400 Bar
	粘度范围 Viscosity Rang	20~3,000 CPs	20~3,000 CPs
	流量范围(CC/Min) Flow Range (CC/Min)	10~2,000CC/Min	100~7,000CC/Min
	流量率(CC/Plus) Flow Rate (CC/Plus)	0.068CC/Plus	0.252CC/Plus
	精度 Accuracy	+/- 0.5%	+/- 0.5%
	重复性 Repeatability	+/- 0.1%	+/- 0.1%
	供电电源 Supply Power	10~30V DC	10~30V DC
	标准电流(mA) Typicle Current (mA)	Max '15 mA	Max '15 mA
	信号输出 Signal Output	Plus	Plus
性能预览 Property Overview			
单组份1K	+++	带填充剂Filled	+
双组份2K	+++	研磨性 Abrasive	-
大气环境 Atmospheric Pressure	+++	连续性 Continuous	+++
真空环境Vacuum	+++	准备 Preparation	
液体 Liquid	+++	供料 Feeding	
高粘度	-		
+ + + = 非常优秀 Exellent + + = 优秀Good + = 有限制 Limited - = 不推荐 Not Recomand			

根据客户流量范围要求情况，订制流量计  
Based on customer application requirement to build special flow range meters.

供料泵（Drum Pump）

流体供料泵作为双作用止回泵，除润滑脂和油外，它还加工粘度高达500万兆帕的粘合剂、密封剂、聚氨酯或硅树脂。原料直接从原容器进料,活塞泵是单站物料供应的理想选择，它同样适用于中央物料供应系统。该系列泵能模块化、柔性、经济性的产品，其极为可靠、易于维护和维修。

This drum pump model is available exclusively as a double-acting chop check pump. Along with greases and oils, it also processes adhesives, sealants, polyurethanes or silicones with viscosities of up to 5.0 million mPas. Material is fed directly from the original containers. The piston pump is ideal for individual station material supply and it serves equally well as a central material supply system. The pumps in this range are modular, robust, economical, extremely reliable and easy to maintain and service.



型号 Model Name	DPS-020	DPS-040	DPS-055	DPS-068
重量 Weight	135Kg			
尺寸 Body size	L650*W480*H1280			
泵结构 Type of Pump	Check Mate			
压缩空气范围 Air supplier Range	< Max 7 Bar			
粘度范围 Viscosity Rang	1-5,000,000 cp			
压缩比 Compression Ratio	20:1	40:1	55:1	68:1
适用物料桶 Barrel Size	55 Gal			
最大流体压力 (Bar) Maximum fluid supply Pressure	130	260	358	442
流体流量 (CC/Cycle) Fluid Flow Per Cycle(CC)	171	86	62	50
适用流体 Apply Fluids	Grease , Oil, RTV& Epoxy , polyurethane			
进口/出口螺纹尺寸 Fluid Inlet/ Outlet Port	Out Rc 3/4"			

根据客户要求及流体材质(粘度/颗粒磨损性等)情况，配置定子材料及陶瓷转子可供选择  
Based on customer application requirement & liquid material to define stator property and providing ceramics rotor option.

供料泵（Drum Pump）

流体供料泵作为双作用止回泵，除润滑脂和油外，它还加工粘度高达500万兆帕的粘合剂、密封剂、聚氨酯或硅树脂。原料直接从原容器进料,活塞泵是单站物料供应的理想选择，它同样适用于中央物料供应系统。该系列泵能模块化、柔性、经济性的产品，其极为可靠、易于维护和维修。

This drum pump model is available exclusively as a double-acting chop check pump. Along with greases and oils, it also processes adhesives, sealants, polyurethanes or silicones with viscosities of up to 5.0 million mPas. Material is fed directly from the original containers. The piston pump is ideal for individual station material supply and it serves equally well as a central material supply system. The pumps in this range are modular, robust, economical, extremely reliable and easy to maintain and service.



型号 Model Name	DPB-020	DPB-040	DPB-055	DPB-068
重量 Weight	245Kg			
尺寸 Body size	L1050*W660*H1580			
泵结构 Type of Pump	Check Mate			
压缩空气范围 Air supplier Range	< Max 7 Bar			
粘度范围 Viscosity Rang	1-5,000,000 cp			
压缩比 Compression Ratio	20:1	40:1	55:1	68:1
适用物料桶 Barrel Size	55 Gal			
最大流体压力 (Bar) Maximum fluid supply Pressure	130	260	358	442
流体流量 (CC/Cycle) Fluid Flow Per Cycle(CC)	171	86	62	50
适用流体 Apply Fluids	Grease , Oil, RTV& Epoxy , polyurethane			
进口/出口螺纹尺寸 Fluid Inlet/ Outlet Port	Out Rc 3/4"			

根据客户要求及流体材质(粘度/颗粒磨损性等)情况，配置定子材料及陶瓷转子可供选择  
Based on customer application requirement & liquid material to define stator property and providing ceramics rotor option.

1K Metering System  
单组份定量系统

- 1K齿轮伺服定量系统 1K Gear Servo Metering System
- PFC 精确连续流量计量和分配系统 Precision Flow Control System
- SMV1 1K螺杆阀 1K Screw metering Valve

GMS:1K齿轮伺服定量系统 1K Gear Servo Metering System

Talos容积式齿轮定量系统是专为连续应用而针对糊状粘合剂、密封剂和灌封材料设计的系统。基于容积操作原理，GMS 非常适用在通用的、低脉动的剪切敏感进给和高粘性介质。即使在高入口压力，GMS 涂敷也是有完全一致性。此外，GMS系统也提供了高度的柔性化制造过程，同一系统能够同时应用到不同需求量的工件上。客户也受益于其极低的维护和应用成本。

Talos volumetric gear pump dispensers, they have been specially designed for the continuous application of paste-like adhesives, sealants and potting materials. Due to their principle of operation, allow for a very gentle, low-pulsation feed of shear-sensitive and highly viscous media. Dispensing is completely consistent even with high inlet pressures. Moreover, these systems provide a high degree of flexibility when working with variable material quantities or when applying media to different workpieces. Users also benefit from minimal downtimes, low maintenance costs and thus reduced overall operating cost.



型号 Model Name	GMS-001
重量 Weight	3,5kg
尺寸 Body size	L560*W130*H130
工作温度 working Temp	0-200℃
液体种类 Liquid Type	1K
流体输入压力 Fluid Inlet Pressure	< Max 20 Bar
粘度范围Viscosity Rang	<2,000,000 CPs
出胶量(CC/Cycle) Dispensing CC/Cycle	1.2CC/R
最大出胶速度 R/Min MAX dispensing Speed	200R/Min
精度 Accuracy	+/- 2%
供电电源 Supply Power	220V AC
标准电流(A) Typicle Current (A)	2A
适用流体 Apply Fluids	Sealant, Heat dissipation adhesive & silicone resin
进口螺纹尺寸 Inlet Port	Inlet Rc 3/8" Outlet :G 1/4

根据客户要求，选配排量  
Based on customer application requirement, providing different dispensing volume

性能预览 Property Overview			
单组份1K	+++	带填充剂Filled	+
双组份2K		研磨性 Abrasive	-
大气环境 Atmospheric Pressure	+++	连续性 Continuous	+++
真空环境Vacuum		准备 Preparation	
液体 Liquid	+	供料 Feeding	
高粘度	+++		
+++ = 非常优秀 Excellent ++ = 优秀Good + = 有限制 Limited - = 不推荐 Not Recomand			



### DPM:2K柱塞式定量系统 2K Piston Servo Metering Proportioner

2K 柱塞式伺服定量是具有高精度,优良再现性的综合定量系统,同时配合精巧的混胶结构设计, 能够满足客户在整个混胶喷涂过程中高质量的要求, 定制专用的密封材质提高了密封件的耐磨损性,极大提高了整个定量系统寿命, 特别适合在带有填充剂/研磨性介质流体中的使用, 有优秀的质量表现。

2K piston servo metering system is a comprehensive quantitative system with high precision and excellent reproducibility. At the same time, combined with exquisite glue mixing structure design, it can meet the high-quality requirements of customers in the whole glue mixing and dispensing process. The dedicated sealing material improves the wear resistance of seals and greatly improves the service life of the whole system. It is especially suitable for use in fluids with fillers/abrasive media, It is with excellent quality performance.

	型号 Model Name	PFC-001	性能预览 Property Overview	
	重量 Weight	6.5kg		
	尺寸 Body size	L560*W430*H310		
	工作温度 working Temp	0~200℃		
	液体种类 Liquid Type	1K		
	流体输入压力 Fluid Inlet Pressure	< Max 310 Bar	单组份1K	+++ 带填充剂Filled +
	粘度范围 Viscosity Rang	30~1,000,000 CPs	双组份2K	研磨性 Abrasive -
	流量范围(CC/Min) Flow Range (CC/Min)	190~7,571CC/Min	大气环境 Atmospheric Pressure	+++ 连续性 Continuous +++
	流量率(CC/Plus) Flow Rate (CC/Plus)	0.143CC/Plus	真空环境Vacuum	准备 Preparation
	精度 Accuracy	+/- 0.25%	液体 Liquid	+ 供料 Feeding
	重复性 Repeatability +/-0.1%	+/- 0.1%	高粘度	+++
	供电电源 Supply Power	220 AC	+ + + = 非常优秀 Excellent + + = 优秀Good + = 有限制 Limited - = 不推荐 Not Recomand	
	标准电流(A) Typicle Current (A)	2A		
		适用流体 Apply Fluids	Sealant, Heat dissipation adhesive& silicone resin	
		进口螺纹尺寸 Inlet Port	Inlet/Out 3/4" NPT	

### SMV1螺杆阀 1K Screw Metering Valve


1K螺杆伺服定量是具有高精度,优良再现性的综合定量系统, 适用于各种低/中/高粘度介质 ( 如油脂、粘合剂、密封剂, 和硅树脂等), 在现代自动化工业中广泛应用。

1K screw servo quantitative system is a comprehensive quantitative system with high precision and excellent reproducibility. It is suitable for all kinds of low / medium / high viscosity media (such as grease, adhesive, sealantand silicone resin). It is widely used in modern automation industry.

SMVS1



SMVB1



型号Model Name	SMVS1 Series	SMVB1 Series
重量Weight	800g/900g	2.65~3.6Kg
尺寸Body size	L29*W29*H261.5 L30*W60*H300	L60*W100*H400
粘度范围Viscosity Rang	0~150,000 CPs	0~500,000 CPs
每转流量 Flow Per Cycle(cc/R)	0.05cc/R 0.14cc/R	0.35~1.7cc/R
精度Accuracy	+/-1%	+/-1%
定子材料 Stator Material	FFKM,EPDM, FKM,PUR	FFKM,EPDM, FKM,PUR
转子材料 Rotor Material	SUS304, 硬质合金, 陶瓷	SUS304, 硬质合金, 陶瓷
进口压力 Inlet Fluids pressure	6bar	6bar
出口压力 Fluid Inlet/ Outlet Port	21bar	21bar
工作温度 Working pressure range	0~80℃	0~80℃

根据客户要求, 选配排量

Based on customer application requirement, providing different dispensing volume

性能预览

Property Overview

单组份1K	+++	带填充剂Filled	-
双组份2K		研磨性 Abrasive	-
大气环境 Atmospheric Pressure	+++	连续性 Continuous	+++
真空环境Vacuum	-	准备 Preparation	
液体 Liquid	-	供料 Feeding	
高粘度	+		
+++ = 非常优秀 Exellent ++ = 优秀 Good + = 有限制 Limited = 不推荐 Not Recomand			

## 2K Metering System 双组份定量系统

- 2K定比伺服定量系统 2K Fixed-Ratio Servo Metering System  
EFP:电驱定比定量系统 Electric, Fixed-Ratio Proportioner  
HFP:液驱定比定量系统 Hydraulic, Fixed-Ratio Proportioner

- 2K柱塞式伺服定量系统 2K Piston Servo Metering System  
DPM:2K柱塞式定量系统 2K Piston Servo Metering Proportioner

- SMV2 2K螺杆阀 2K Screw metering Valve

### EFP:电驱定比定量系统 Electric, Fixed-Ratio Proportioner

2K电驱定比定量系统具有高精度, 优良再现性的综合定量系统, 同时配合MXI双组份系列混料阀, 能够满足客户在整个混胶喷涂过程中高质量的要求, 定制专用的密封材质提高了密封件的耐磨损性,极大提高了整个定量系统寿命, 特别适合在带有填充剂/研磨性介质流体中的使用, 有优秀的质量表现。

2K Electric, Fixed-Ratio Proportioner has a comprehensive quantitative system with high accuracy and excellent reproducibility. At the same time, combined with MXI series mixing valve, it can meet the customers' requirements for high quality in the whole process of mixing and spraying. The customized special sealing material improves the wear resistance of the seal, greatly improves the life of the whole quantitative system, especially suitable for use in fluids with filler/abrasive media, it has excellent quality performance.

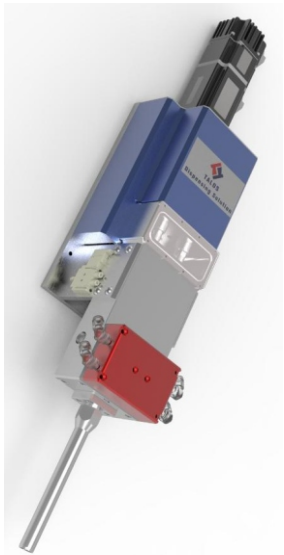
	型号Model Name	EFP-001	性能预览 Property Overview	
	重量Weight	65.0Kg		
	尺寸Body size	L1006*W458*H325		
	工作温度 working Temp	0~80℃		
	液体种类 Liquid Type	2K	单组份1K	+++ 带填充剂Filled ++
	流体输入压力 Fluid Inlet Pressure	< Max 150 Bar	双组份2K	+++ 研磨性 Abrasive +++
	粘度范围Viscosity Rang	<5,000,000 CPs	大气环境 Atmospheric Pressure	+++ 连续性 Continuous +++
	混胶比率Mix Rate	Based On Customer Requirement	真空环境Vacuum	+++ 准备 Preparation
	最大出胶量(CC) MAX Meeting	160CC	液体 Liquid	++ 供料 Feeding
	精度 Accuracy	+/- 2%	高粘度	+++
	供电电源 Supply Power	220V AC	+ + + = 非常优秀 Excellent + + = 优秀Good + = 有限制 Limited - = 不推荐 Not Recomand	
	标准电流(A) Typicle Current (A)	15A		
	适用流体Apply Fluids	AB Sealant & silicone resin and so on		
		进口螺纹尺寸 Inlet Port	Inlet G3/4"	

根据客户要求及流体材质(粘度/颗粒磨损性等)情况, 选配定量体材料及处理等  
Based on customer application requirement to define property of cylinder material & treatment and so on.

## DPM:2K柱塞式定量系统 2K Piston Servo Metering Proportioner

2K 柱塞式伺服定量是具有高精度，优良再现性的综合定量系统，同时配合精巧的混胶结构设计，能够满足客户在整个混胶喷涂过程中高质量的要求，定制专用的密封材质提高了密封件的耐磨损性，极大提高了整个定量系统寿命，特别适合在带有填充剂/研磨性介质流体中的使用，有优秀的质量表现。

2K piston servo metering system is a comprehensive quantitative system with high precision and excellent reproducibility. At the same time, combined with exquisite glue mixing structure design, it can meet the high-quality requirements of customers in the whole glue mixing and dispensing process. The dedicated sealing material improves the wear resistance of seals and greatly improves the service life of the whole system. It is especially suitable for use in fluids with fillers/abrasive media. It is with excellent quality performance.



型号Model Name	DPM-003	DPM-005	DPM-010	DPM-015	性能预览 Property Overview
重量Weight	3.5.0Kg				
尺寸Body size	L560*W130*H130				
工作温度 working Temp	0-80℃				
液体种类 Liquid Type	2K				
流体输入压力 Fluid Inlet Pressure	< Max 100 Bar				
粘度范围Viscosity Rang	<1,000,000 CPs				
混胶比率Mix Rate	Based On Customer Requirement				
最大出胶量(CC) MAX Meeting	3CC	5CC	10CC	15CC	
最大出胶速度 CC/S MAX dispensing Speed	1.25CC/S	2.10CC/S	4.20CC/S	6.25 CC/S	
精度 Accuracy	+/- 2%	+/- 2%	+/- 2%	+/- 2%	
供电电源 Supply Power	220V AC	220V AC	220V AC	220V AC	
标准电流(A) Typicle Current (A)	5A	5A	5A	5A	
适用流体Apply Fluids	Sealant, Heat dissipation adhesive & silicone resin				
进口螺纹尺寸 Inlet Port	Inlet G3/8"				

单组份1K	+++	带填充分Filled	++
双组份2K	+++	研磨性 Abrasive	+++
大气环境 Atmospheric Pressure	+++	连续性 Continuous	+++
真空环境Vacuum	准备 Preparation		
液体 Liquid	++	送料 Feeding	
高粘度	+++		
+++ = 非常优秀 Excellent ++ = 优秀Good + = 有限制 Limited - = 不推荐 Not Recomand			

根据客户应用要求及流体材质(粘度/颗粒磨损性等)情况, 配置定子材料及陶瓷转子可供选择  
Based on customer application requirement & liquid material to define stator property and providing ceramics rotor option.

## 螺杆阀 2K Screw Metering Valve

2K螺杆伺服定量是具有高精度、优良再现性的综合定量系统，适用于各种低/高粘度介质（如油脂、粘合剂、密封胶、和硅树脂等）在现代自动化工业中广泛应用。

2K screw servo quantitative system is a comprehensive quantitative system with high precision and excellent reproducibility. It is suitable for all kinds of low / medium / high viscosity media (such as grease, adhesive, sealant and silicone resin). It is widely used in modern automation industry.



型号Model Name	SMVS2 Series	SMVB2 Series	性能预览 Property Overview			
重量Weight	800g/900g	2.65~3.6Kg				
尺寸Body size	L68*W29*H275	L60*W100*H400	单组份1K	+++	带填充剂Filled	-
粘度范围Viscosity Rang	0~150,000 CPs	0~500,000 CPs	双组份2K		研磨性 Abrasive	-
每转流量 Flow Per Cycle(cc/R)	0.05cc/R 0.14cc/R	0.7cc/R(1:1)	大气环境 Atmospheric Pressure			
精度Accuracy	+/-2%	+/-1%		+++	连续性 Continuous	+++
定子材料 Stator Material	FFKM, EPDM, FKM, PUR	FFKM,EPDM, FKM,PUR	真空环境Vacuum			
转子材料 Rotor Material	SUS304, 硬质合金, 陶瓷	SUS304, 硬质合金, 陶瓷		-	准备 Preparation	
混合比Mix Rate	1: 1~1: 10	1: 1~1: 10	液体 Liquid	-	供料 Feeding	
进口压力 Inlet Fluids pressure	6bar	6bar	高粘度			
出口压力 Fluid Inlet/ Outlet Port	21bar	21bar		+		
工作温度 Working pressure range	10~40℃	0~80℃	+ + + = 非常优秀 Excellent + + = 优秀 Good + = 有限制 Limited - = 不推荐 Not Recomand			

根据客户应用要求，选配定量排量等  
Based on customer application requirement, providing different dispensing volume

## Material Preparation And Feeding Unit 材料准备与供给单元

- DPL自流平介质备料单元  
DPL Self-leveling Media Material Preparing Unit
- DPP 真空压盘供料单元  
DPP Vacuum Plate Material Feeding Unit
- SPB 单柱塞增压供料单元  
Single Piston Booster Material Feeding Unit

## DPL自流平介质备料单元 DPL Self-leveling Media Material Preparing Unit

许多粘合剂、密封剂和灌封材料很难制备和分配，因此我们的DPL物料准备和供给单元配备了温度/消泡/搅拌等控制功能，允许其对介质的粘度产生有针对性的影响，一体化排气消泡系统在处理流体过程中去除材料中的空气，循环搅拌系统可防止所含填料沉淀，为工件的卓越质量提供均匀连续且无气泡的介质，确保工件质量。即使在生产暂停或更长时间的中断之后，也可保持介质相同的高质量应用。

Many adhesives, sealants, and potting materials are difficult to prepare and dispense. Therefore, our DPL material preparation and supply unit is equipped with temperature/defoaming/stirring control functions. It allows to have a targeted impact on the viscosity of the medium. The integrated exhaust defoaming system removes air from the material during the processing of the fluid. The circulating stirring system can prevent the precipitation of the filler contained. Providing a uniform, continuous, and bubbleless medium for the excellent quality of the workpiece to ensure the quality of the workpiece. Maintain high-quality applications of the same media even after production pauses or longer interruption.



型号Model Name	DPL-001	性能预览 Property Overview		
重量Weight	505 Kg			
尺寸Body size	L702*W1432*H1724			
泵结构Type of Pump	Dual-P Check Mate			
压缩空气范围 Air supplier Range	< Max 7 Bar			
粘度范围Viscosity Rang	1~10,000 Cps			
压缩比 Compression Ratio	3:1			
适用物料桶 Barrel Size	40L			
最大流体压力(Bar) Maximum fluid supply Pressure	20			
流体流量 (CC/Cycle) Fluid Flow Per Cycle(CC)	335			
供电电源 Supply Power	380V AC			
标准电流(A) Typicle Current (A)	15A			

单组份1K	+++	带填充剂Filled	+
双组份2K	+++	研磨性 Abrasive	+
大气环境 Atmospheric Pressure	+++	连续性 Continuous	+++
真空环境Vacuum	+++	准备 Preparation	+++
液体 Liquid	+++	供料 Feeding	+++
高粘度	+		
+ + + = 非常优秀 Excellent + + = 优秀 Good + = 有限制 Limited - = 不推荐 Not Recomand			



### DPP 真空压盘供料单元 DPP Vacuum Plate Material Feeding Unit

DPL 是一个全自动的双活塞真空压盘供料单元，它经过了长时间的验证。它多用于高粘度和同研磨性粘合剂和灌封材料。泵体活塞的一侧与材料接触，另一侧包含一个润滑液，润滑液可有效防止填充物粘附到密封件和泵部件上，有效确保泵体较长的使用寿命。DPL is a fully automated feeding unit. It is a long time proven dual–piston vacuum pressure plate feeding unit. It is mostly used for high viscosity and abrasive adhesives and potting materials. One side of the piston of the pump body is in contact with the material, and the other side contains a lubricant that effectively prevents the filler from adhering to the seals and pump components, this ensures a long service life for the pump.

	型号Model Name	DPP–003	<div>性能预览 Property Overview</div> <table><tr><td colspan="4"> </td></tr><tr><td>单组份1K</td><td>+++</td><td>带填充剂Filled</td><td>++</td></tr><tr><td>双组份2K</td><td>+++</td><td>研磨性 Abrasive</td><td>+++</td></tr><tr><td>大气环境 Atmospheric Pressure</td><td>+++</td><td>连续性 Continuous</td><td>+++</td></tr><tr><td>真空环境Vacuum</td><td>+</td><td>准备 Preparation</td><td>+++</td></tr><tr><td>液体 Liquid</td><td>–</td><td>供料 Feeding</td><td>+++</td></tr><tr><td>高粘度</td><td>+++</td><td colspan="2">+ + + = 非常优秀 Exellent + + = 优秀Good + = 有限制 Limited – = 不推荐 Not Recomand</td></tr></table>						单组份1K	+++	带填充剂Filled	++	双组份2K	+++	研磨性 Abrasive	+++	大气环境 Atmospheric Pressure	+++	连续性 Continuous	+++	真空环境Vacuum	+	准备 Preparation	+++	液体 Liquid	–	供料 Feeding	+++	高粘度	+++	+ + + = 非常优秀 Exellent + + = 优秀Good + = 有限制 Limited – = 不推荐 Not Recomand	
	单组份1K	+++			带填充剂Filled	++																										
	双组份2K	+++			研磨性 Abrasive	+++																										
	大气环境 Atmospheric Pressure	+++			连续性 Continuous	+++																										
	真空环境Vacuum	+			准备 Preparation	+++																										
	液体 Liquid	–			供料 Feeding	+++																										
	高粘度	+++			+ + + = 非常优秀 Exellent + + = 优秀Good + = 有限制 Limited – = 不推荐 Not Recomand																											
	重量Weight	105 Kg																														
	尺寸Body size	L1300*W480*H1280																														
	泵结构Type of Pump	Dual–P Check Mate																														
	压缩空气范围 Air supplier Range	< Max 7 Bar																														
	粘度范围Viscosity Rang	1~1,000,000 Cps																														
	压缩比 Compression Ratio	3:1																														
适用物料桶 Barrel Size	5 Gal/20L																															
最大流体压力(Bar) Maximum fluid supply Pressure	20																															
流体流量 (CC/Cycle ) Fluid Flow Per Cycle(CC)	366CC																															
供电电源 Supply Power	220V AC																															
标准电流(A) Typiclc Current (A)	10A																															
适用流体 Apply Fluids	Grease,RTV& Epoxy, polyurethane,Silicon																															
进口/出口螺纹尺寸 Fluid Inlet/ Outlet Port	Out Rc 3/4"																															

根据客户要求及流体材质(粘度/颗粒磨损性等)情况，配置定子材料及陶瓷转子可供选择  
Based on customer application requirement & liquid material to define stator property and providing ceramics rotor option.

### SPB 单柱塞增压供料单元 Single Piston Booster Material Feeding Unit

SPB 是一个全自动的单柱塞供料单元，它经过了长时间的验证。它多用于小包装高粘度和研磨性粘合剂和灌封材料。泵体活塞的一侧与材料接触，另一侧包含一个润滑液，润滑液可有效防止填充物粘附到密封件和泵部件上，有效确保泵体较长的使用寿命。SPB is a fully automated feeding unit. It is a long time proven single–piston feeding unit. It is mostly used for small pack high viscosity and abrasive adhesives and potting materials. One side of the piston of the pump body is in contact with the material, and the other side contains a lubricant that effectively prevents the filler from adhering to the seals and pump components, this ensures a long service life for the pump.



型号Model Name	SPB-001
重量Weight	35kg
尺寸Body size	L:262.6*W132.5*H48.5
泵结构Type of Pump	Single-P Check Mate
压缩空气范围 Air supplierRange	<7 Bar
粘度范围Viscosity Rang	1~1,000,000 Cps
压缩比 Compression Ratio	1:3
适用物料桶 Barrel Size	170/200/340/400/600/950CC and So on
最大流体压力 ( Bar ) Maximum fluid supply Pressure	<36 Bar
流体流量 ( CC / Cycle ) Fluid Flow Per Cycle(CC)	183CC/Cy1
适用流体 Apply Fluids	Grease, RTV& Epoxy, polyurethane,Silicon
出口螺纹尺寸 Fluid Inlet/Outlet Port	G1/2"

根据客户要求及流体材质(粘度/颗粒磨损性等)情况，配置定子材料及陶瓷转子可供选择  
Based on customer application requirement & liquid material to define stator property and providing ceramics rotor option.

根据客户要求及流体材质(粘度/颗粒磨损性等)情况，配置定子材料及陶瓷转子可供选择  
Based on customer application requirement & liquid material to define stator property and providing ceramics rotor option.

## Accessory 附件

- CLS电容式液位计 Capacitive Level Sensor
- 高压液压管 High Pressure Hose
- 加热温控管 Heating pressure hose
- 储液罐 Liquid Tank
- 其他 Others

### 液位传感器 Level Sensor

#### CLS电容式液位计 Capacitive level sensor

Talos 与业内知名流量与液位传感技术公司合作，合作开发了适应于各种流体介质的电容式液位传感器，一站式传感解决方案，量身定制专业产品，高效快捷的满足客户需求。

Talos has collaborated with well–known flow and liquid level sensing technology company in the industry to develop capacitive level sensors. It is suitable for various fluid media, a one–stop sensing solution, and customized professional products to efficiently and quickly meet customer needs.



产品名称	电容式液位传感器
电 源	220VAC、50/60Hz /24VDC、100mA
灵 敏 度	0.3pF或更小
工作温度	–20~80℃（高温可定制）
环境温度	–40~80℃
工作压力	–0.1~2.5MPa
输 出	模拟量 4~20 mA（2线输出）
触点容量	AC220V/5A、DC24V/5A
响应时间	标准：0.2秒;带延时：0.2~50秒可调
电气接口	M20×1.5
防护等级	IP65
防 爆	客户可选
过程连接	3/4"NPT螺纹、1"NPT螺纹、定制螺纹; DN50 PN1.0法兰（HG20592–97）、定制法兰
接液材质	SUS304/316、PTFE（可根据客户要求定制）
检测范围	可根据客户要求定制
接线材质	铝合金

高质量/高压液压管 High quality/high pressure hose



产品名称 高质量/高压液压管  
工作温度  $-40 \sim 80^{\circ}\text{C}$   
环境温度  $-40 \sim 80^{\circ}\text{C}$   
工作压力  $<70\text{MPa}$   
管 接 口 按照客户定制  
长 度 按照客户定制

加热保温管 Heating pressure hose



产品名称 加热保温管  
电 源  $220\text{VAC}$ 、 $50/60\text{Hz}$  /  $48\text{VDC}$   
温度监控 是  
工作温度  $0 \sim 200^{\circ}\text{C}$  ( 温度与压力成反比 )  
环境温度  $-10 \sim 80^{\circ}\text{C}$   
工作压力  $<20\text{MPa}$   
温度输出 模拟量  $4 \sim 20\text{mA}$  ( 2线输出 )  
触点容量  $\text{AC}220\text{V}/5\text{A}$ 、 $\text{DC}24\text{V}/5\text{A}$   
管 接 口 按照客户定制  
长 度 按照客户定制

储液罐 Liquid Tank



产品名称 高质量储液罐  
环境温度  $-0 \sim 50^{\circ}\text{C}$   
工作压力  $<0.7\text{MPa}$   
尺 寸 按照客户定制